

Area Maggia, ELEV 5347FT
WGS84 N 46 15 47 / E 008 38 43
NO RESTRICTIONS SSW OF LINE
N 46 16 10 / E 008 33 36 – N 46 15 27 / E 008 37 10
– N 46 12 43 / E 008 41 43

Area Lostallo
ELEV 5060FT
WGS84 N 46 17 20 / E 009 09 26
TMA LSZL NOT AFFECTED



LS-R Flugplatz Locarno (GND – 8'000ft AMSL)

Semi-circle of 7km radius
centered at LSZL/Locarno AD (WGS84 N 46 10 00 / E 008 52 48; ELEV 650FT)
NO RESTRICTIONS OF SOUTHERN TMA BORDERLINE.



LS-R MYTHEN (3'000ft AMSL – FL90)

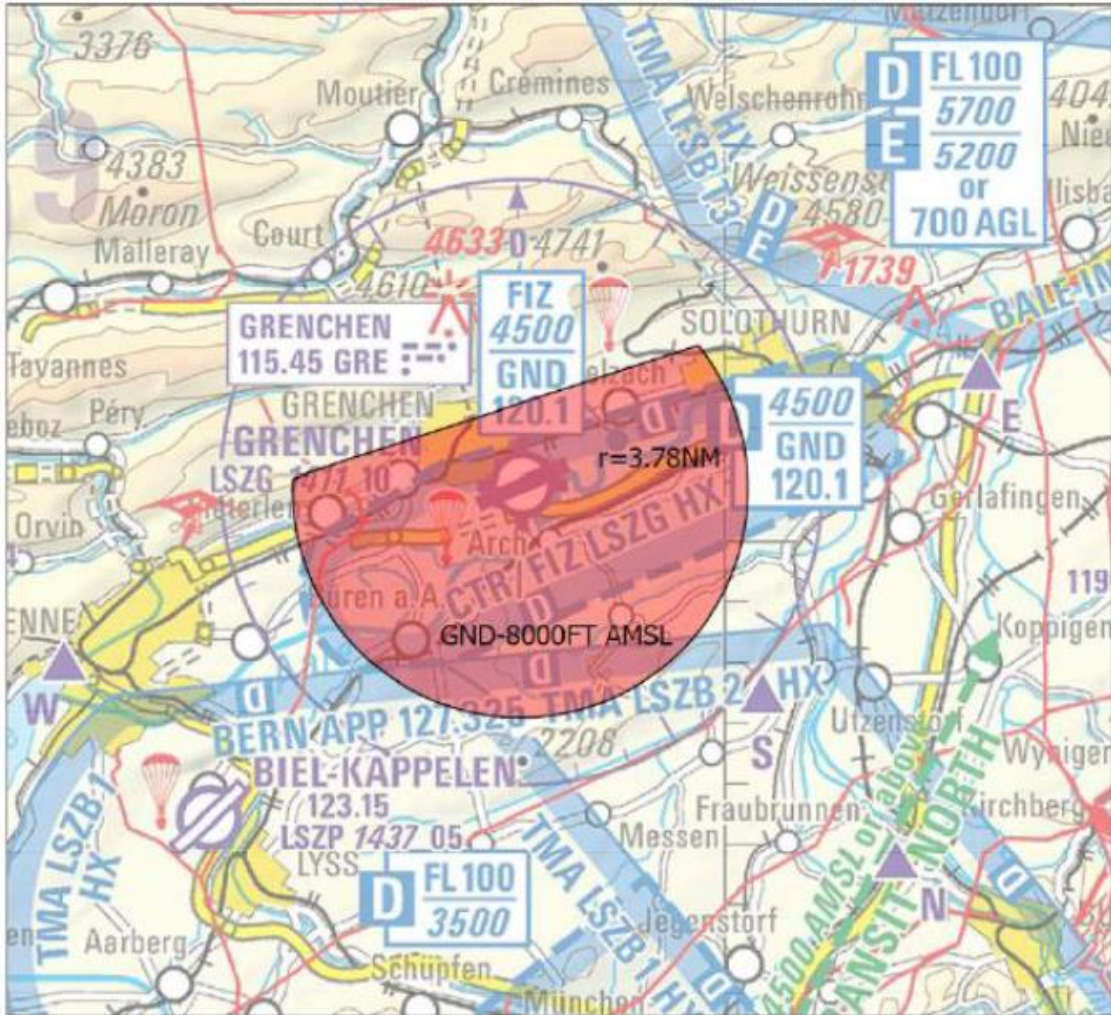
Circle of 10km radius,
centered at Gross Mythen (WGS84 N 47 01 48 / E 008 41 20, ELEV 6230FT)



The use of area Mythen depends on the present MET conditions!

LS-R GRENCHEN (GND – 8'000ft AMSL)

Circle of 7km radius,
centered at ARP Grenchen (WGS84: N 47 10 53 / E 007 24 59, ELEV 1405FT),
NO RESTRICTIONS NW OF LINE ORVIN-NIEDERBIPP.



4.7 Aktivierungszeiten LS-R (alles Lokalzeiten)

	Datum	Maggia/ Lostalio	Fipl LOC	Mythen	Grenchen
KW 18/19	06.05.21	1330-1430 1545-1645	-	-	-
	07.05.21	0830-0930 1045-1145 1415-1515	-	-	-
	10.05.21	1330-1430 1545-1645	- 1445-1515	-	-
	11.05.21	0830-0930 1045-1145 1415-1515	0830-0900 1100-1130 1445-1515	-	-
	12.05.21	0830-0930 1045-1145	0830-0900 1100-1130	-	-
KW 21/22	25.05.21	-	-	1045-1145 1430-1530	-
	26.05.21	-	-	0830-0930 1045-1145 1430-1530	-
	27.05.21	-	-	0830-0930 1045-1145 1430-1530	-
	28.05.21	-	-	0830-0930 1045-1145 1430-1530	- - 1420-1510
	31.05.21			1030-1130 1430-1530	1035-1125 -